



*"Three Leaves"*

**Grand Prize**

*Gordana Brelih*

# THREADWORKS 2010

*— a travelling juried exhibition of creative needlework —*

# TREES

# THREADWORKS 2010

— a travelling period exhibition of creative needlework —

## **Threadworks**

Threadworks is a special project of the Ontario Network of Needleworkers (ONN) and is sponsored by the Wellington County Museum and Archives (WCMA). Most of the inaugural show will travel the Province of Ontario for up to three years and be exhibited in Southampton, Kirkland Lake, Haileybury, Woodstock, Fort Frances, Kenora, Gananoque, Whitby, Dryden, Bright's Grove, Coburg, Almonte and Amherstburg. Follow Threadworks 2010 on line at [www.onnguilds.ca](http://www.onnguilds.ca) or [www.wcm.on.ca](http://www.wcm.on.ca).

## **Co-ordinators**

Elizabeth Duggan Litch, Assistant Curator

Connections Fibre Artists and Canadian Embroiderers' Guild, Guelph

Sharron Begg, Connections Fibre Artists

Virginia Buchanan-Smith, Founding member, ONN

Susan Strachan Johnson, Connections Fibre Artists and Canadian Embroiderers' Guild, Guelph

Maggie Vanderweit, Connections Fibre Artists

Dawn Labelle, Guelph Needlecraft Guild

JoAnne Oldridge, Canadian Embroiderers' Guild Guelph

Elizabeth Bayne, Canadian Embroiderers' Guild Guelph

## **Jurors**

Susan Burke, Manager/Director, Joseph Schneider Haus, Kitchener, and McDougall Cottage, Cambridge

Judith Dingle, Fibre artist, teacher and lecturer, Toronto

Dianne Gibson, Fibre artist, teacher, Fonthill

**Photography** by Icon Photography Inc. Guelph

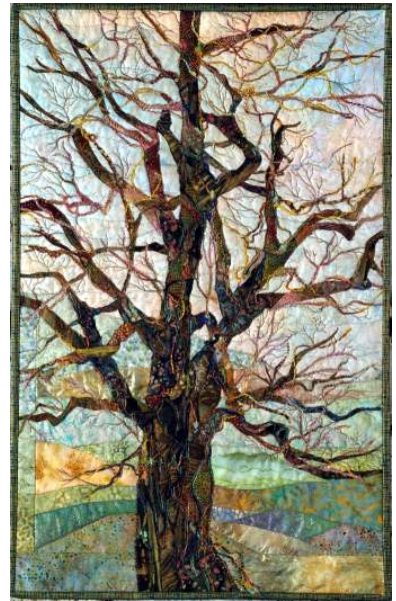
Rick Kowalczykowski [www.iconphotoinc.com](http://www.iconphotoinc.com)

**Page Design & Printing** by Rockside Studio, Rockwood [www.quican.com/rockside](http://www.quican.com/rockside)

***Unauthorized reproduction of any image in this catalogue is expressly forbidden without the written permission of the artist.***



Merilyn J Arms (Boswell, BC)  
**Tree Mandala** (24"x24")



Merilyn J Arms  
**Catalpa - 100 Years Proud**  
(30"x19")

**FREE MOTION STITCHING AWARD**



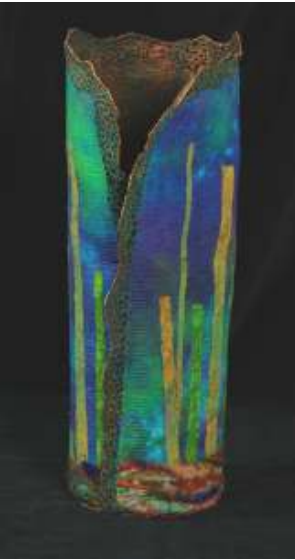
Sharron Begg (Guelph, ON)  
**Georgian Bay Pine** (20"x30")

**HONOURABLE MENTION**



Penny Berens (Granville Ferry, NS)  
**Trees Standing Tall at Midnight**  
(20"x26.5")

**HONOURABLE MENTION**



Marie Black (Engelhart, ON)  
**Clear Cut** (16.5"x5.5" dia)



Hieke Blohm (Newmarket, ON)  
**A New Beginning** (29"x17"x2")



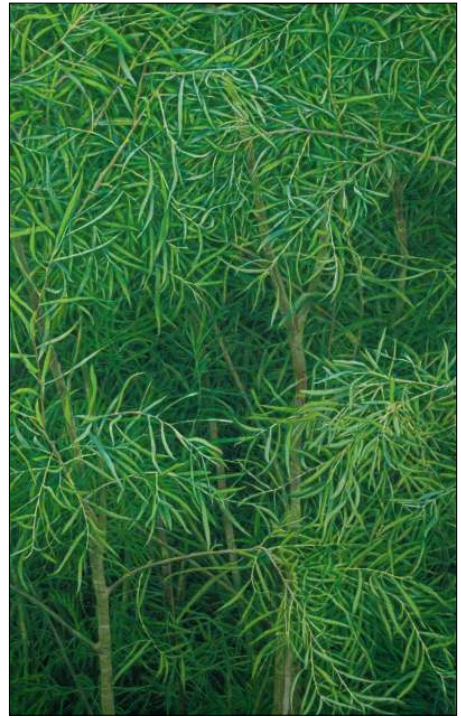
Kim Bowlender (Haliburton, ON)  
**Gone Green II** (10"x7"x3")



**GRAND PRIZE**  
Gordana Brelih (Toronto, ON)  
**Three Leaves** (51"x34")



Maureen Byer (Kingston, ON)  
**The Trail** (10"x8")



Martha Cole (Lumsden, SK)  
**Elemental Green: Willows** (42"x26")



Anne Condie (Toronto, ON)  
**Northern Blues** (15.5"x13")



Barbara Cook (Burford, ON)  
**Talía** (9"x9")



Mary Cope (Princeton, ON)  
**Nature's Gift** (16"x 23")



Aggie Downes (Vineland, ON)  
**Spring on John Street** (19x23")



Bethany Garner (Elginburg, ON)  
**Understory** (48"x24")



Donna Funnell (Milton, ON)  
**The Message** (20.5"x21.5")



Helen Gordon  
(Kanata, ON)  
**Vidarr - Norse God  
of the Forest**  
(20"x16"x3.5")

**FIRST JURIED  
SHOW AWARD**



Laurna M Green  
(Barrie, ON)  
**Legacy** (33"x15")



Phillida Hargreaves (Kingston, ON)  
**New Zealand Bush** (40" x 26")



Susan Hickey  
(London, ON)  
**Crimson Cascade**  
(12.5"x10")



Pat Hertzberg (Mississauga, ON)  
**Big Sky Sunset with Trees** (23"x23")



Linda Hiebert (Thornhill, ON)  
**Can't See the Trees for the Forest**  
(24"x25"x4")



Helen Hughes (Guelph, ON)  
**Indian Summer** (11.5"x25.5")□



Barbara Lee Johnson (Guelph, ON)  
**Heralds of Spring** (21"x20")

Trish Johnson (Toronto, ON)  
**Memories of Capreol** (23"x27")



Trish Johnson  
**Spring in Toronto** (27"x29")



Catharina Breedy K Law (Perth, ON)  
**First Snow** (16"x16")



Tracey Lawko (Toronto, ON)  
**Crabapple Branch** (13"x13")



Tracey Lawko  
**November Hedgerow**  
(11"x13")

Frankie LeMonde-Meunier  
(Elgin, ON)  
**Morning Song** (35"x21")



Robin Laws Field  
(Kingston, ON)  
**In the Depression  
My Parents Made  
Buttons**  
(3"x9"x5")

**CURATOR'S  
AWARD**



Frankie LeMonde-Meunier  
**Trees Dancing for Joy** (19"x14")



Judy Leslie (Coquitlam, BC)  
**The Vanishing Grove** (32"x40.5")



Patricia Long (Aurora, ON)  
**Tree Rings** (16.5"x13.5")

### HAND EMBROIDERY AWARD



Kate Madeloso (Halifax, NS)  
**Message to Earth** (17"x18")



Nancy McNab (Rockwood, ON)  
**Shoe Tree** (25"x18")

**TRADITIONAL STITCHING AWARD**



Patricia Menon (Fonthill, ON)  
**The Legend of the Cherry Tree**  
(41.5"x31")



Penny Milton (Toronto, ON)  
**Autumn Aspens (7"x7")**



Deborah Milton (Toronto, ON)  
**Jungle Jive (27"x27")**



Tia Bourne Mushka (Cambridge, ON)  
**Finding the Things I Lost in the Forest**  
(14"x12"x5")



Eileen Neill (Qualicum Beach, BC)  
**Ginkgo - The Living Fossil** (38"x22")



Eileen Neill  
**Is It Spring Yet?** (24.5"x32.5")



Marcella Pedersen (Cut Knife, SK)  
**Crooked Trees in 1999 at Speers, SK** (8.5" x 10")



Sybil Rampen (Oakville, ON)  
**Tree Root Puppets** (20"x40")



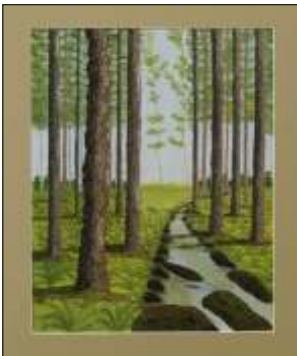
Janet Rhind (Oakville, ON)  
**Elfina** (23"x13"x13")



Kiyomi Sakamoto  
(Toronto, ON)  
**Dead Ends**  
(26"x21")



Susan Strachan Johnson, (Everton ON)  
**Maples on the Seventh Line**  
(12.5"x18")



Kathy Tidswell (Burtt's Corner, NB)  
**Serenity** (20"x17")



Nancy Turner (Orangeville, ON)  
**Through the Branches** (11"x10")



Susan Strachan Johnson  
**Pine Bark** (18"x8.5"x2")



Laura Trach (Minden, ON)  
**Finding the Way**, 13"x17")

**HONOURABLE MENTION**



Kathy Tyers (Milton, ON)  
**Heartfelt** (15.5"x14.5")



Maggie Vanderweit (Fergus, ON)  
**Water and Wood** (20"x26")



Elizabeth Vandenburg  
(Bath, ON)  
**Autumn Colour**  
(6"x11")



Dell Walker (Ottawa, ON)  
**A Box of Trees** (2.75"x4"x4")



Lorraine Vella  
(Thunder Bay, ON)  
**Portrait of the Soul  
of our Tree**  
(21"x16")





Beverley A White (Port Elgin, ON)  
**Paisley Mill and the Twig Deer (21"x26")**



Dell Walker (Ottawa, ON)  
**Spring in Provence, France (9"x10")**



Beverley A White  
**Winter Sunset at Gerry's Fries (16"x20")**

**MIXED MEDIA AWARD**



Carol Wiebe (Kitchener, ON)  
**A Feast of Photons (26"x35.5")**



Carol Wiebe  
**Wild Desire (18"x24")**

## **Ontario Network of Needleworkers**

The ONN is a communications network aimed at encouraging a regular exchange of information about workshops, teachers, courses, exhibitions, juried shows and other resources relevant to needlework groups in Ontario. It consists of about twenty guilds, representing a combined membership of close to 1000 people.

## **Donors of the Threadworks 2010 Awards**

With thanks to all our generous donors, who funded our ten awards:

Brant Broderers  
Canadian Embroiderers' Guild, Guelph  
Canadian Embroiderers' Guild, Kitchener  
Canadian Embroiderers' Guild, London  
Kingston Fibre Arts  
Niagara Peninsula Art Guild  
Oakville Stitchery Guild  
Simcoe County Embroidery  
Studio Inspirations  
Toronto Guild of Stitchery

## **Award Winners**

With congratulations to the winners!

Grand Prize: Gordana Brelih "Three Leaves"  
Curator's Award: Frankie LeMonde-Meunier "Trees Dancing for Joy"  
First Juried Show: Laurena M Green "Legacy"  
Free Motion Embroidery: Sharron Begg "Georgian Bay Pine"  
Hand Embroidery: Kate Madeloso "Message to Earth"  
Mixed Media: Carol Wiebe "A Feast of Photons"  
Traditional Stitching: Patricia Menon "The Legend of the Cherry Tree"  
Honorable Mentions: Penny Berens "Trees Standing Tall at Midnight"  
Hieke Blohm "A New Beginning"  
Kathy Tyers "Heartfelt"

## **Wellington County Museum and Archives**

Since its inception, Threadworks has been supported by the Wellington County Museum & Archives, located at 0536 Wellington County Rd 18, between Fergus and Elora. Housed in a magnificent limestone structure built in 1877 as the County House of Industry and Refuge, and renovated in 1987, an extraordinary exhibit space has been created in both the traditional and the contemporary.

Regular Museum Hours are Monday to Friday 9:30 a.m. to 4:30 p.m.

Weekends and holidays, 12 - 4 p.m.

T (519) 846-0916 F (519) 846-9630

E-mail: [info@wcm.on.ca](mailto:info@wcm.on.ca)

Further information from [www.wcm.on.ca](http://www.wcm.on.ca).

